

HP2000 Wireless Weather Station and Data Logger

with Wi-Fi for upload of live data to the internet *

* Wi-Fi Network and Internet connection required

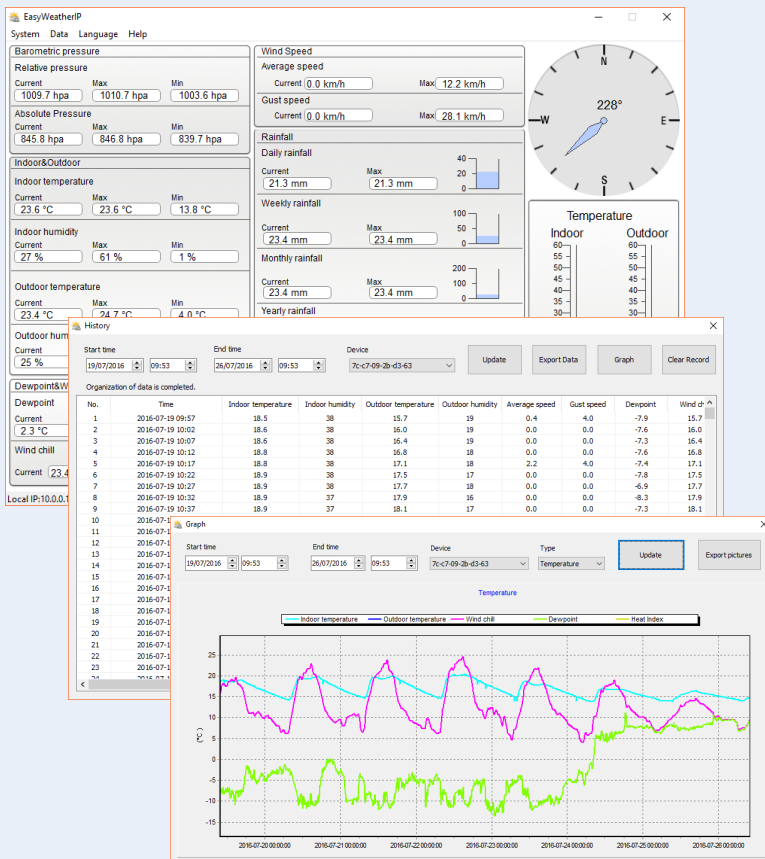
View your Weather data on-line, anytime, anywhere
Real-time data, graphs, tables and historic records

Pre-configured weather server:

(Registration required - currently free for non-commercial use)

www.wunderground.com

- ◇ ICASA Approved Cert. No. TA-2016/1708
- ◇ 7" TFT LCD Colour display with Wi-Fi
- ◇ Compact outdoor sensor array with solar panel
- ◇ 433MHz for up to 100m range (line of sight)
- ◇ Indoor sensor for Humidity, Temp and Pressure
- ◇ 3705MB on board memory for years of stored data
- ◇ Historic graphs, tables and Min/Max records
- ◇ Micro SD card slot for backup of data
- ◇ USB port for free firmware updates
- ◇ User configurable units, log interval and server
- ◇ User calibration adjustment and alarm settings
- ◇ Weather tendency forecast and storm warning based on barometric pressure rate of change
- ◇ Includes software to access HP2000 over Wi-Fi network for remote viewing and data download



Specification:	
Transmission range:	Up to 100m (open field)
Frequency:	433MHz
Outdoor Interval:	Every 16 seconds
Indoor Interval:	Every 64 seconds
Temperature (outdoor):	-30 to +65°C
Temperature (indoor):	-10 to +60°C
Humidity (outdoor):	1 to 99% RH
Humidity (indoor):	1 to 99% RH
Pressure:	300 to 1100 hPa
Wind Speed:	0 to 50 m/s (180 km/h)
Wind Direction:	0 to 360° / 16 point compass
Solar Radiation:	0 to 2000 W/m ²
UVI and UV:	0 to 12 or UV in μW/cm ²
Rainfall:	Rate, Day, Week, Month, Year
Others:	Wind Gust, Wind Chill, Dew Point Heat Index, Moon Phase Sunrise/Sunset
Power Supply:	Base station by AC mains adapter Indoor sensor 2 x AAA batteries Outdoor sensor 3 x AA batteries

Test and Measurement Instruments C.C.

www.instrumentsgroup.co.za Tel: 011 683 4365

Email: t.m.i@iafrica.com